

- Avoiding data overload with superoverlays (raster and image data)
- Avoiding data overload with regionation (vector data)
- Converting with ogr2gui
- Exporting from ArcGIS -- Example workflow
- Importing to QGIS

- **Vector data**

- Points/placemarks
- Lines/paths
- Polygons/shapes

- **Raster data**

- Images (e.g. satellite images, aerial photographs)
- Other grid-based datasets

- **Why convert to Google Earth KML?**

- Think of it as the HTML or PDF of the GeoWeb
- KML stands for “Keyhole Markup Language” (XML based)

- Google Earth Pro
 - Convert SHP-to-KML (with regionation)
 - Convert raster data to image overlays (with superoverlay)
- ArcGIS Toolbox
 - Convert SHP-to-KML
- Arc2Earth, an ArcGIS extension
 - Convert SHP-to-KML (with much customization)
- Quantum GIS (free)
 - Convert KML-to-SHP (you can add KML data, and save as shapefiles)
- ogr2gui
 - Convert SHP-to-KML
 - Convert KML-to-SHP

- **Google Earth Pro features**
 - Import GIS data formats
 - Create "superoverlay" of high-res images
 - "Regionate" large number of KML features
 - Export & print high-resolution images
 - Measure areas & circles
 - Record movie to play off-line or upload to YouTube
- **Google Earth Pro is free to eligible non-profits and educational institutions**
 - Non-profits apply here: earth.google.com/outreach/grants.html
 - Edu apply here: sitescontent.google.com/google-earth-for-educators/
 - Costs \$400 for all other individuals and orgs.

Superoverlays in Earth Pro



- Google Earth Pro 6.0 supports creating Superoverlays
- Get help in the [Earth User Guide](#).

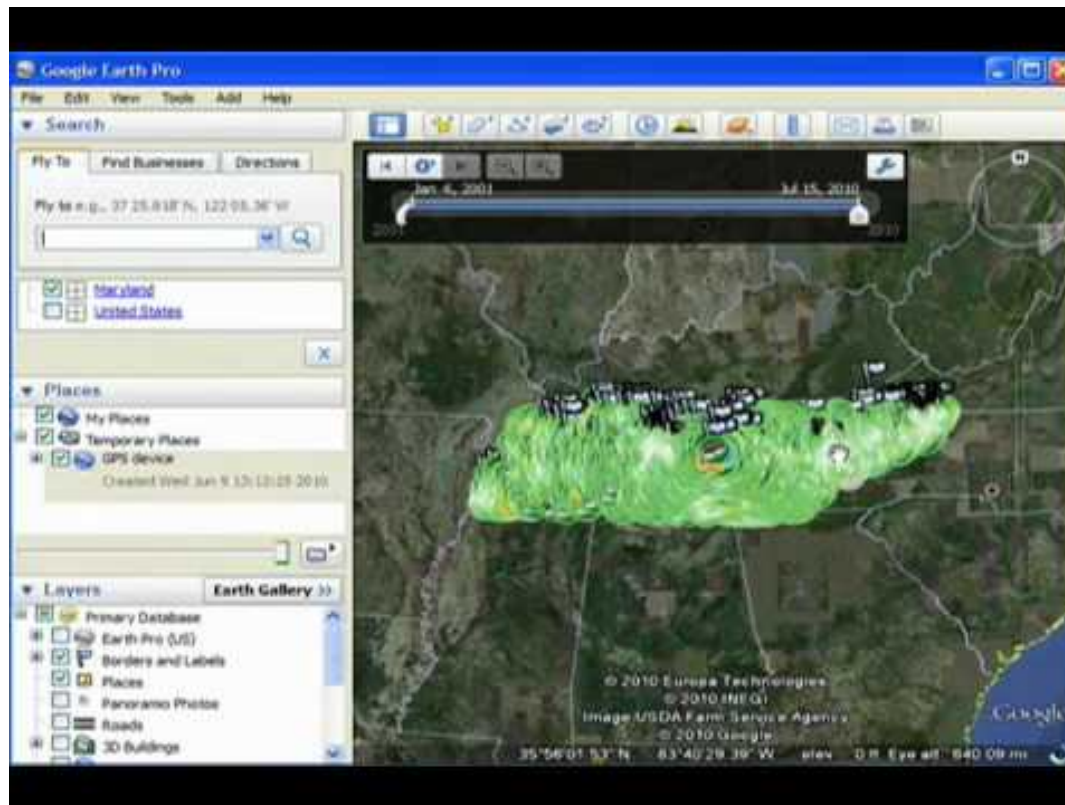


- Another tool option is superoverlay.geoblogspot.com/

Vector Regionation in Earth Pro

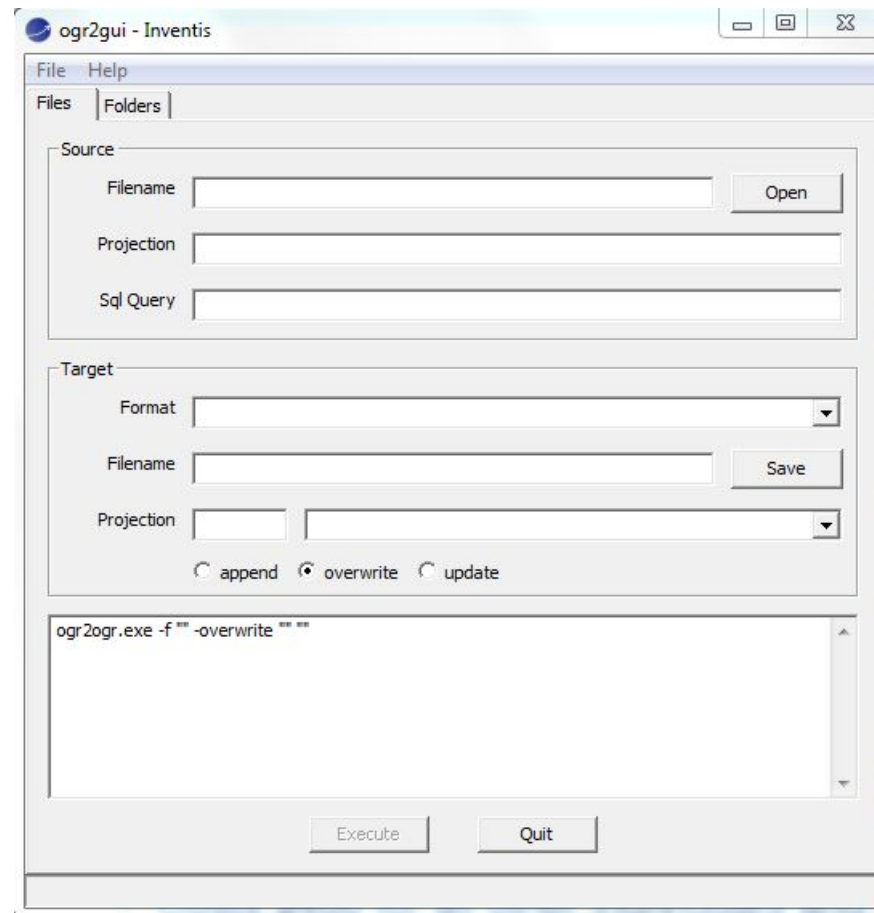


- Google Earth Pro 6.0 supports creating Superoverlays
- Get help in the [Earth User Guide](#).



- Learn more about [Working with Regions](#).

- Download ogr2gui from <http://sourceforge.net/projects/ogr2gui/>
- Converts to/from KML and shapefiles and other vector formats.



- ArcGIS
 - ArcToolbox > 3D Analyst > Conversion > Export to KML
 - Arc2Earth: www.arc2earth.com
- Quantum GIS
 - Download for free at qgis.org
 - You can add KML layers, and save as shapefiles.